

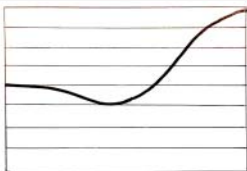
Activity

Winter Sledge



Make a Template

The template for this sledge depends on the size of the box. Lay the side of the box that is to become the base of the sledge on a piece of paper and trace around it. Divide the rectangle in eight equal horizontal sections (see below). From the top righthand corner draw a curve down to the centre of the 5/8th line and then curve it back up to the half way line, finishing on the left. The bottom section of the curve will give you a template for the side of the sledge.



- YOU WILL NEED:**
- Marker
 - Scissors
 - A small cardboard box
 - Glue
 - Pencil
 - Paints
 - Paper
 - Tape

1. Choose a suitable box. We chose a box that has a side measuring 13cm x 18cm approximately. This will become the base of the sledge. If necessary, remove any tape as the box can be glued again afterwards and it makes it easier to paint.
2. Lay the template that you have made on one of the long sides, perpendicular to the base. This will become the side of the sledge. Trace the curve onto the box. Repeat for the opposite side of the box (flipping the template). On the shorter sides of the box, draw straight lines to join the curves. Then cut along the lines. Glue the flaps of the box closed where necessary.
3. For the runners underneath the sledge. Make the straight part of these a little longer than the base of the sledge, then add extra for the curves. These can be as ornate as you wish. Cut a slot into the base of the sledge, about 2.5cm in from the edge and half the depth of the runner, and slot the runner into it. Repeat for the other runner.
4. To make the seat, cut a piece of card approximately 5/8ths of the height of the sledge but its full width plus 5cm. Fold 2.5cm in from each side to create tabs. Glue tabs and slot into the sledge. For the seat, cut card the size of the full template and fold in four to create a rectangular box. Tape to hold the shape and glue in place.
5. Paint your sledge and decorate with markers or paint.

Toilet rolls were used to make the reindeer in the photograph above. The legs and antlers were constructed by making holes in the rolls and threading pipe cleaners through and twisting them. The rolls were then stuffed with paper and the ends cover with tape and then painted.



Image courtesy of Susan Murphy Wickens

© 2017 Sherkin Island Marine Station & its licensors. All rights reserved.